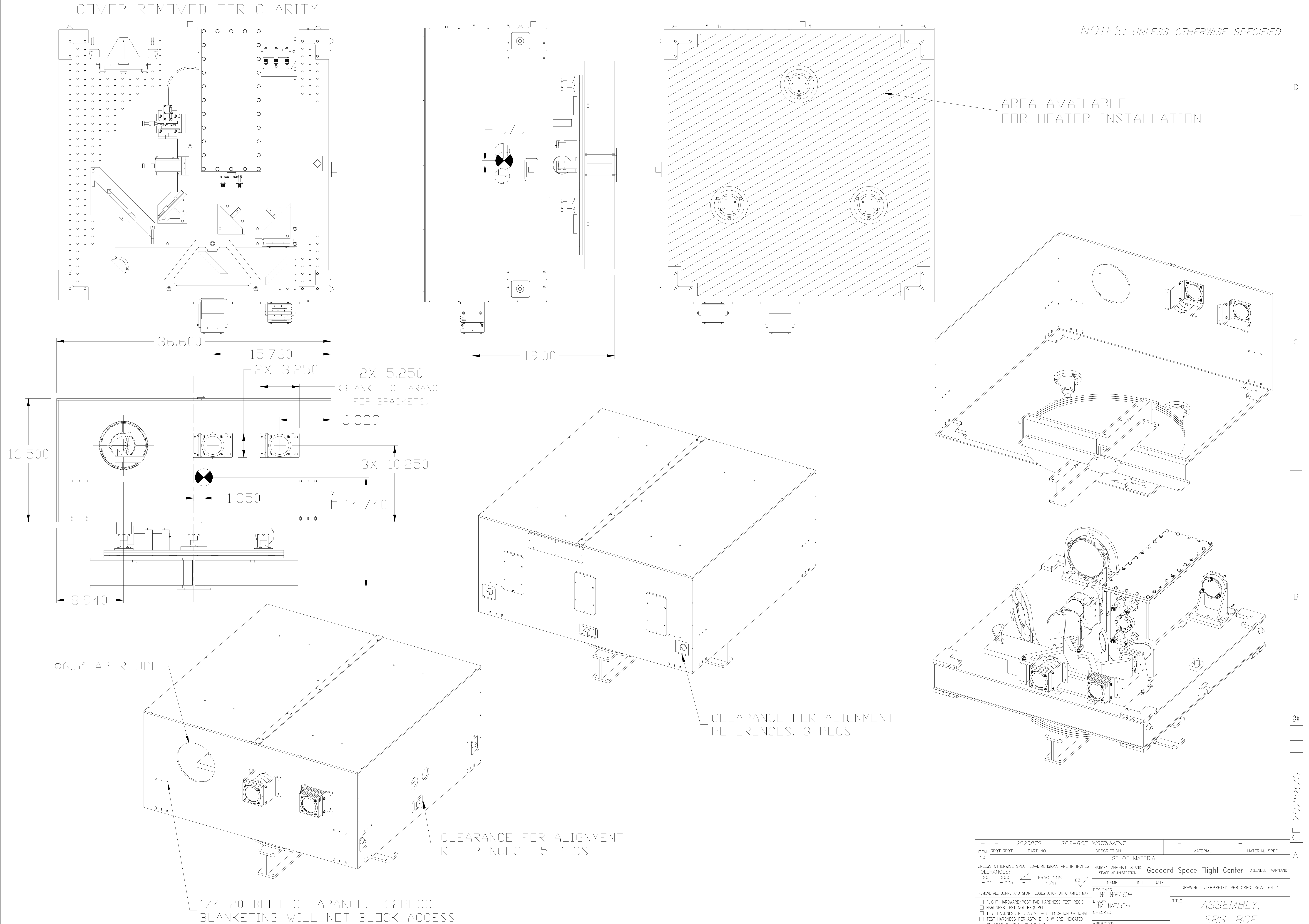


REVISION			
SYM	DESCRIPTION	DATE	APPROVAL

NOTES: UNLESS OTHERWISE SPECIFIED

COVER REMOVED FOR CLARITY

AREA AVAILABLE FOR HEATER INSTALLATION



1/4-20 BOLT CLEARANCE, 32PLCS.
BLANKETING WILL NOT BLOCK ACCESS.

CLEARANCE FOR ALIGNMENT REFERENCES, 3 PLCS

CLEARANCE FOR ALIGNMENT REFERENCES, 5 PLCS

THIS DRAWING WAS PRODUCED USING
SOFTWARE: AUTOCAD VERSION: 14
FILE NAME: 2025870.DWG

ITEM NO	REQ'D/REQ'D	PART NO.	DESCRIPTION	MATERIAL	MATERIAL SPEC.
2025870 SRS-BCE INSTRUMENT					
LIST OF MATERIAL					
UNLESS OTHERWISE SPECIFIED-DIMENSIONS ARE IN INCHES					
TOLERANCES:					
.XX	.XXX	FRACTIONS	63	NATIONAL AERONAUTICS AND SPACE ADMINISTRATION	
±.01	±.005	±1"	±1/16	Goddard Space Flight Center GREENBELT, MARYLAND	
REMOVE ALL BURRS AND SHARP EDGES .010R OR CHAMFER MAX.					
<input type="checkbox"/> FLIGHT HARDWARE/POST FAB HARDNESS TEST REQ'D <input type="checkbox"/> HARDNESS TEST NOT REQUIRED <input type="checkbox"/> TEST HARDNESS PER ASTM E-18, LOCATION OPTIONAL <input type="checkbox"/> TEST HARDNESS PER ASTM E-18 WHERE INDICATED ON FIELD OF DRAWING THUS Ⓢ					
<input type="checkbox"/> NO NON-DESTRUCTIVE EXAMINATION (NDE) REQ'D <input type="checkbox"/> NDE REQUIRED PER 5-313-009 CODE					
DESIGNER			INIT	DATE	DRAWING INTERPRETED PER GSFC-X673-64-1
W WELCH					TITLE
DRAWN					ASSEMBLY, SRS-BCE INSTRUMENT
CHECKED					GE 2025870
APPROVED					CODE 924 SCALE 1/4 WT SH 1 OF 1
APPROVED-STRESS					
GLAS					
NEXT ASSY			USED ON		

GE 2025870